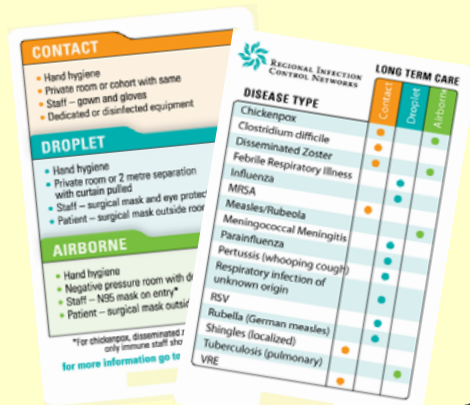


Pocket Card PPE Reference - An Effective Tool for Staff

Tim Cronsberry, BNSc, CIC¹, Christine Moussa, RN, BScN, CIC¹, Jamie Seabrook, MA², Marina Salvadori, MD, FRCPC¹

South Western Ontario Infection Control Network¹, London Health Science Centre²



Project

The South Western Ontario Infection Control Network created pocket cards addressing proper Personal Protective Equipment (PPE) use for Additional Precautions. Both Acute Care and Long Term Care versions were created based on the Provincial Infectious Diseases Advisory Committee's (PIDAC) Best Practice Guidelines in Ontario.

Acute Care and Long-Term Care facilities were recruited for the pilot phase of the project which ran from December 2008 through February 2009. Pocket cards were provided to the infection control lead in the facility for distribution to front-line staff. An instruction sheet was also provided to the infection control lead to be used to educate those receiving the cards.

An evaluation survey was provided to card recipients at the conclusion of the pilot.

Results

- 2019 cards distributed (923 to LTC 1096 to Acute)
- response rate to survey - 32% for LTC, 14% for Acute
- used cards \geq 5 times during pilot - 31% for LTC, 21% for Acute
- Significant increase in comfort with Additional Precautions for both groups following pilot ($p < 0.001$)
- No significant differences between LTC and Acute Care results

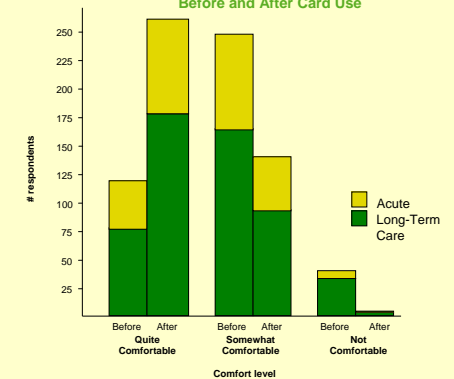
Conclusions

The pocket-card format used in this project offers healthcare workers a convenient resource that will assist them in protecting themselves and others through the effective use of PPE. Feedback from the pilot is being considered for the final version of the cards.

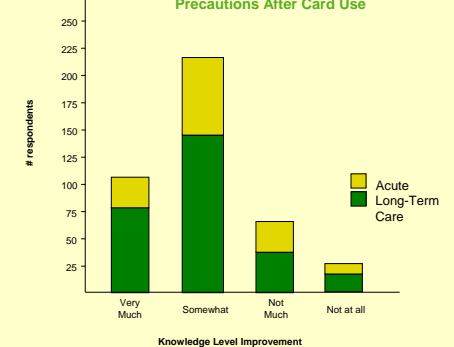
Limitations of this pilot include a poor survey response rate from the Acute Care group. In addition, a pre-pilot evaluation was not conducted, resulting in potential bias on the part of respondents when assessing their own change in comfort and knowledge level of the subject material.

Formal assessment demonstrating improved infection control practice or outcomes would be an ideal though expensive evaluation of the utility of this tool.

Comfort Level with Additional Precautions Before and After Card Use



Improvement of Knowledge of Additional Precautions After Card Use



Issue

In many acute care and long-term care organizations there can be infrequent indications for the use of Droplet, Contact, and Airborne Precautions. In such lower-incidence settings, health care workers may benefit from reminders. The use of precaution signs and pocket cards are examples of such reminders. Pocket cards have been used as a quick reference for CPR steps and acute care "codes." Infection prevention and control practices provide a unique opportunity for the application of this type of tool.

The aim of this pilot project was to:

- ✓ Create an easily implemented pocket reference for staff in settings where indications for the use of Additional Precautions are less frequent
- ✓ Determine the effectiveness of this portable tool for improving health care workers' knowledge and comfort level in the use of personal protective equipment
- ✓ Design the tool to support complementary precaution signage

Special thanks to Norma Reese for assistance with the survey and poster design and layout.

Photo Credit: ©istockphoto .com/JL Varga



South Western Ontario

Giving Health
a Helping Hand

Email: askswoinc@ricn.org