

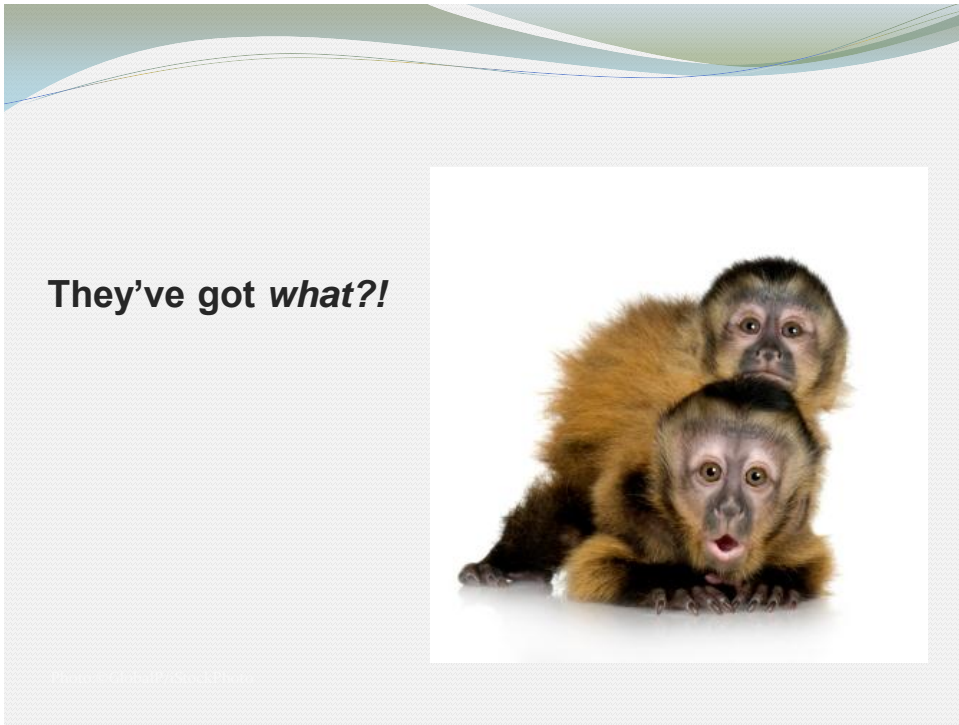
Keeping Germs At Bay: Using Routine Practices *Routinely!*

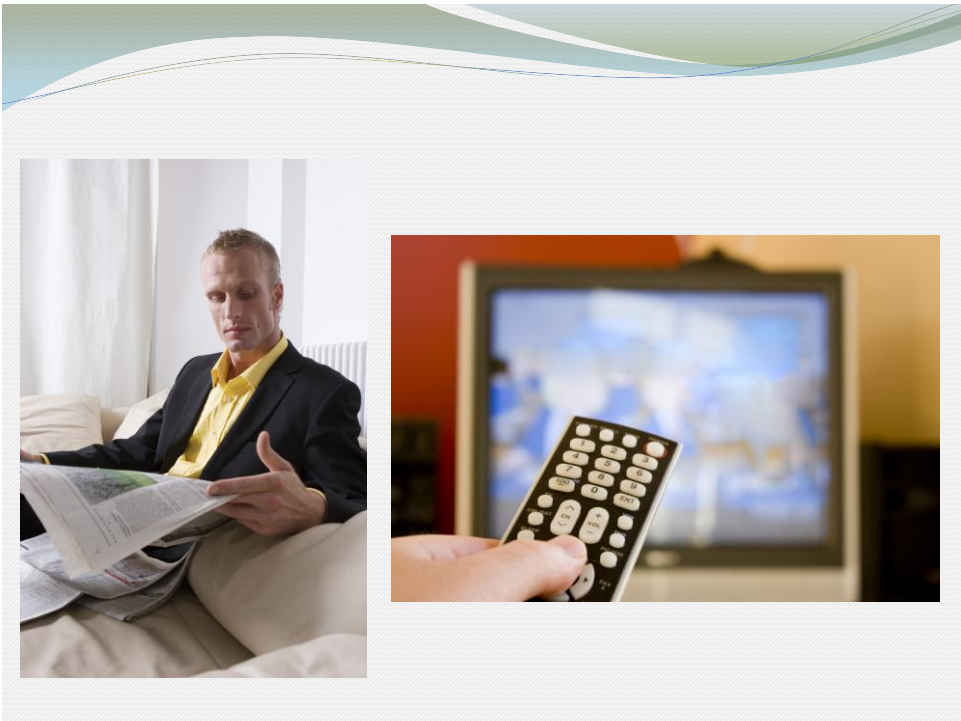
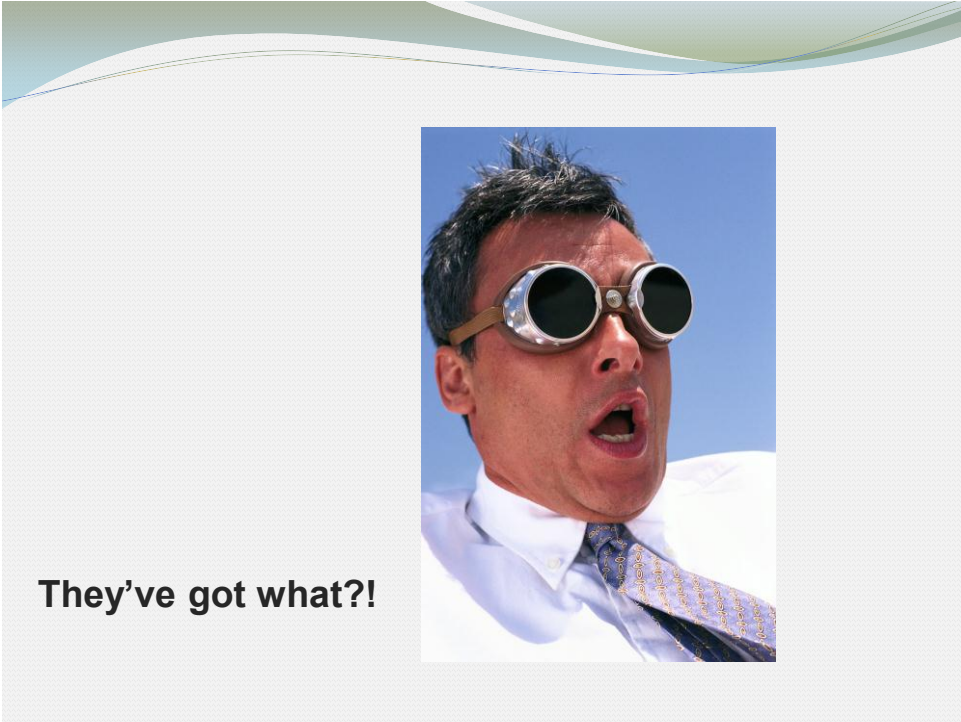
Amanda Knapp BAsC., CPHI(C), CIC



This presentation was developed by:
Laurie Boyer NEOICN
Virginia Tirislis CSICN

They have kindly allowed me to use the content for this
presentation



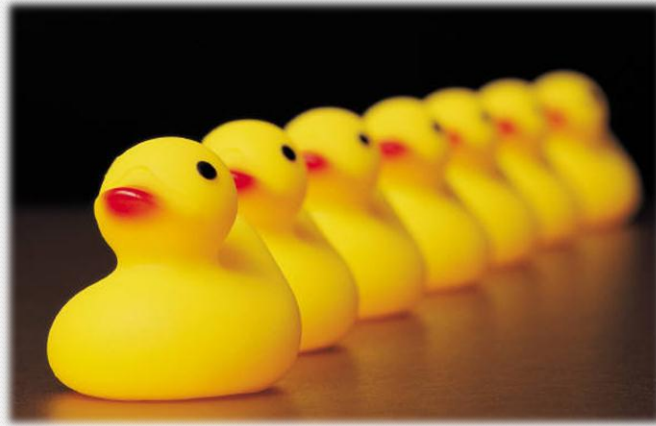






What could happen
if we
do *not* use
Routine
Practices?





**What makes it difficult for
people to carry out
Routine Practices
regularly?**

**What makes it difficult for
people to carry out
Routine Practices
regularly?**



**What makes is difficult for
people to carry out
Routine Practices
regularly?**

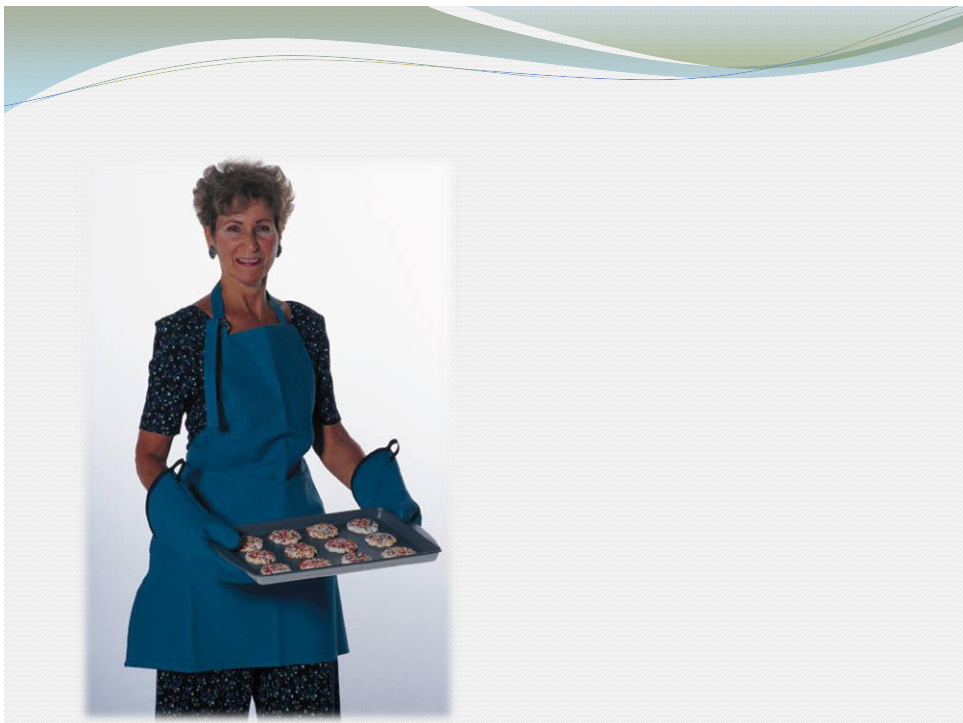


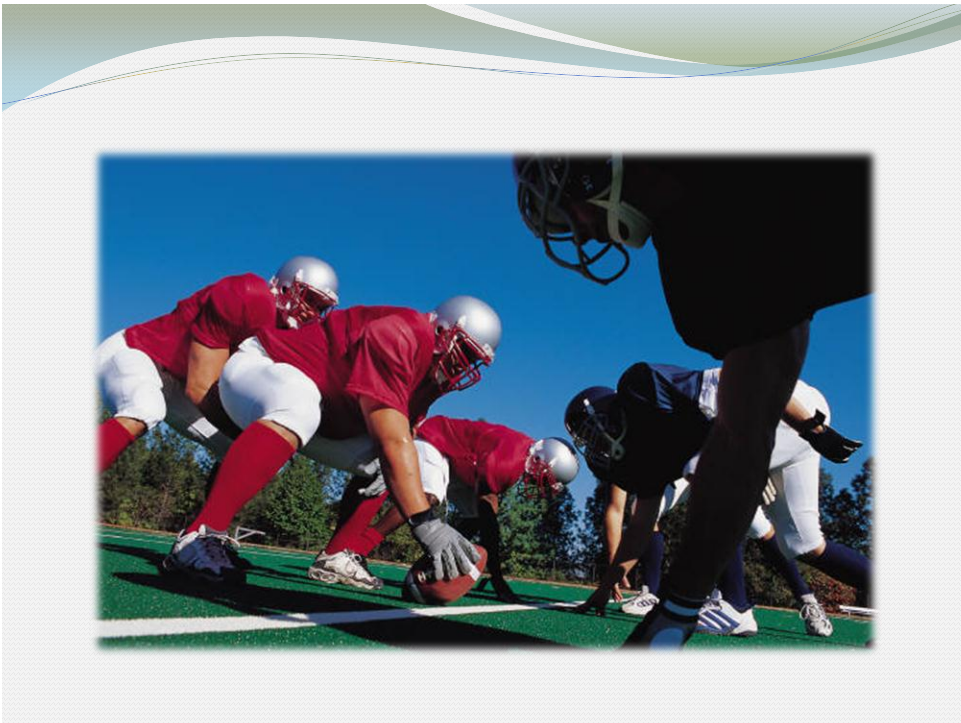
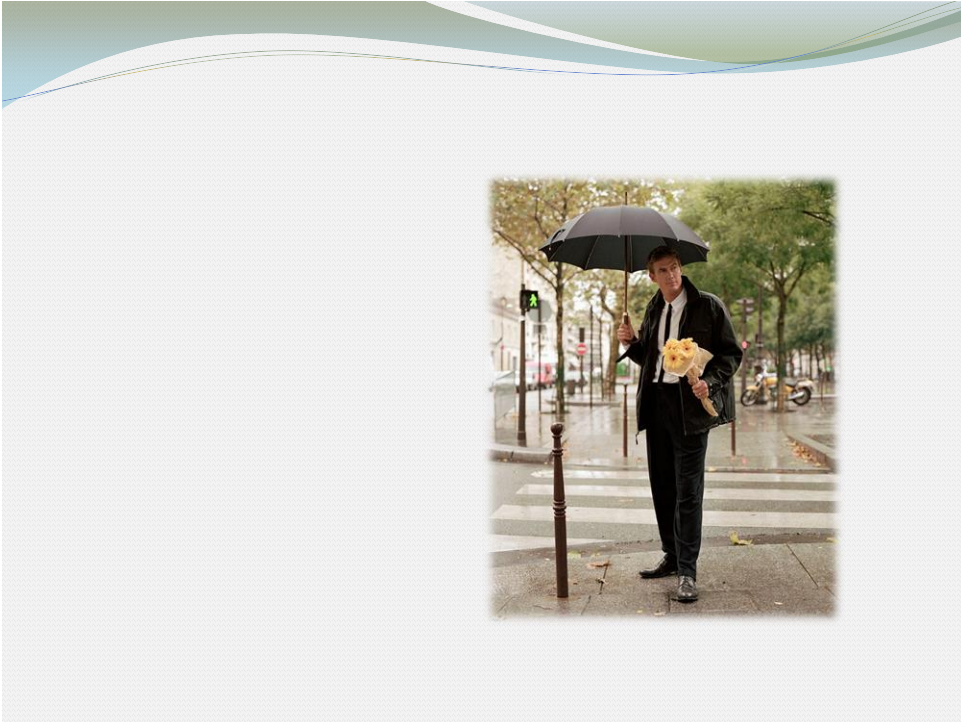
**What are people doing to make it
easier to follow
Routine Practices
routinely?**

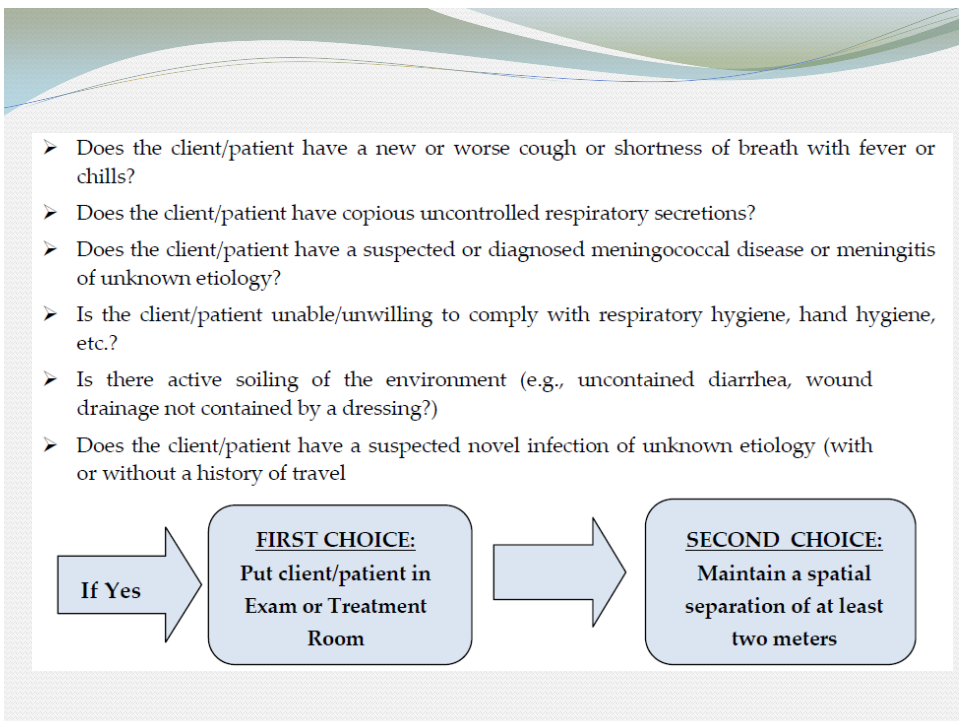
**What are people doing to make it
easier to follow
Routine Practices
routinely?**



**What are people doing to make it
easier to follow
Routine Practices
routinely?**







- Will I be exposed to body fluids (e.g. blood, excretions, secretions)?

If yes, PUT ON PPE AS INDICATED

- Will my hands be exposed to blood, excretions, secretions or contaminated items?

If yes, WEAR GLOVES & PERFORM HAND HYGIENE

- Will my face be exposed to a splash, spray, cough or sneeze?

If yes, WEAR FACIAL PROTECTION

- Will my clothing or skin be exposed to splashes/sprays or items contaminated with blood, excretions or secretions?

If yes, WEAR A GOWN

**What is your
recommendation?**



What could happen
if we *DID* use
Routine
Practices
regularly?

© 2008 Pearson Education, Inc.

- ✓ **Smokin' hot looks**
- ✓ **Devilish personality**
- ✓ **MRSA carrier**

You can't tell by looking



© 2008 Pearson Education, Inc.

Stay Safe!

