

Supporting the Troops Occupational Health Issues



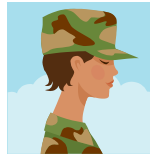
CHICA-EO 2011 Conference
IP&C Boot Camp
Kathleen Poole
RegN, MScN, CIC, COHN®



REGIONAL INFECTION CONTROL NETWORKS  RÉSEAUX RÉGIONAUX DE CONTRÔLE DES INFECTIONS

Supporting the Troops by...

- Knowing the Rules of Engagement
 - You all have duties under the "Act"
- Arming the Troops—What's in your toolkit?
 - Risk Assessment
 - Knowing Routes of Exposure
 - Hand Care Program
 - Immunization
- Knowing when to call ...Medic!
 - Needlestick injury
 - Itchy scratchy stuff
- Knowing when to stay in your foxhole
 - Healthy workplace policy
- Carrying on, even when pregnant
 - Keeping GI Jane and Joey safe



REGIONAL INFECTION CONTROL NETWORKS  RÉSEAUX RÉGIONAUX DE CONTRÔLE DES INFECTIONS

Know your Duties Under the Act: Occupational Health & Safety Act Duties of Employer



Ensure that:

- Worker and supervisor are to be acquainted with any hazard in the workplace: handling, storage, use, disposal and transport of equipment, device or agent, including biological, chemical or physical agents
- Information, instruction and supervision to the worker in its correct usage is provided
- Appropriate equipment, material and protective devices are available and in good working order

- **All reasonable measures are taken for the protection of workers**



REGIONAL INFECTION CONTROL NETWORKS  RÉSEAUX RÉGIONAUX DE CONTRÔLE DES INFECTIONS

Duties of Supervisor

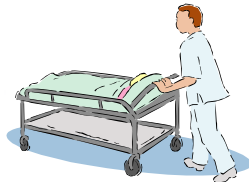
- A Supervisor shall ensure that the worker
 - Works in the manner required and works with the protective devices, measures and procedures required
 - Uses or wears the equipment, protective devices or clothing that the employer requires
 - Is advised of any potential or actual danger to the health or safety of the worker and provides the worker with written instructions as to measures and procedures to be taken for their protection



REGIONAL INFECTION CONTROL NETWORKS RÉSEAUX RÉGIONAUX DE CONTRÔLE DES INFECTIONS

Duties of Worker

- A worker shall
 - Work in compliance with the Act and regulations
 - Use or wear the equipment, protective devices or clothing that the employer requires to be used
 - Report to supervisor the absence of or defect in any equipment



REGIONAL INFECTION CONTROL NETWORKS RÉSEAUX RÉGIONAUX DE CONTRÔLE DES INFECTIONS

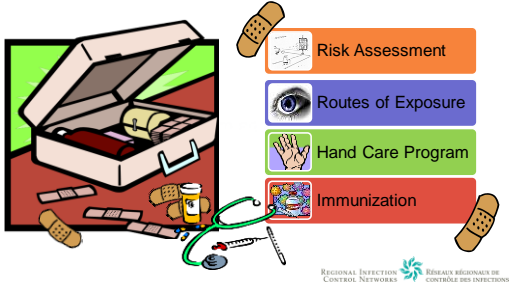
Long Term Care Act Ontario Regulation 79/10

- There is a specific requirement in the Regulation regarding the need for an Infection Prevention and Control Program
- Staff must be screened for tuberculosis and other infectious diseases in accordance with evidence-based practices
- There must be a staff immunization program in accordance with evidence-based practices

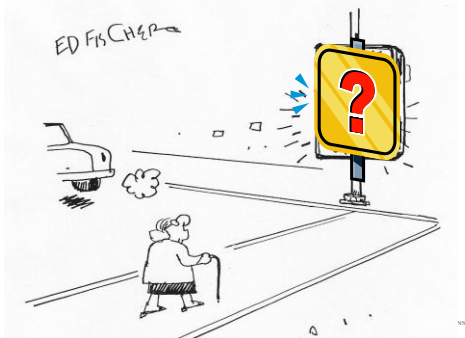


REGIONAL INFECTION CONTROL NETWORKS RÉSEAUX RÉGIONAUX DE CONTRÔLE DES INFECTIONS

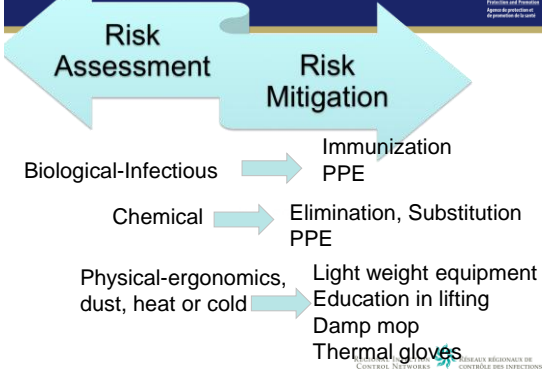
What's in your toolkit?



Horizontal lines for notes.



Horizontal lines for notes.



Horizontal lines for notes.

Psoriatic Skin Lesions



Latex Allergic Contact Dermatitis

Type I allergy 20 min later
An. Bras. Dermatol. vol.84 no.2 Rio de Janeiro Mar./Apr. 2009

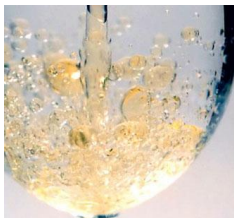
Type IV allergy 96 hours later



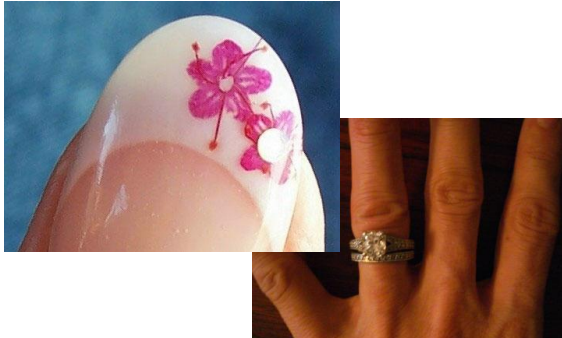
Figure 2: Positive open test for glove fragment.

Figure 1: Positive contact test for Thiuram - mix
REGIONAL INFECTION CONTROL NETWORKS
RÉSEAUX RÉGIONAUX DE CONTRÔLE DES INFECTIONS

Chemicals: It's not just oil and water that don't mix



- Know the ingredients of your products
- Know any interactions between products
- Know the indications for your products
- More is not better
- MSDS available for all



Components for an effective hand care program

- Occupational Health support of "healthy hands" program
- Product selection matters
- Education
- Technique matters
- Protection of hands is a 24 /7 commitment
- Protecting Your Hands Fact Sheet for HCP
- Your Hand Care Assessment Tool



Technique Matters

- Remove hand and arm jewellery when performing hand hygiene
- ABHR- be sure to use enough product to take 15 seconds to dry
- If washing
 - Use warm running water
 - Rinse thoroughly
 - Pat hands dry with paper towel
 - Apply moisturizer
 - Dry hands well before putting on gloves



Moisturizers



ADAM

REGIONAL INFECTION CONTROL NETWORKS RÉSEAUX RÉGIONAUX DE CONTRÔLE DES INFECTIONS

Summary of Hand Care Program

- Hand Care Program should start at time of hire
- Education and Assessment including review of hand hygiene technique
- Include HCP in selection and placement of products
- Underlying hand condition and allergy important
- Ensure correct glove use and technique
- Don't forget importance of moisturizer
- Healthy hands are less likely to become infected and less likely to transmit infection
- Remember hand care is a 24/7 operation

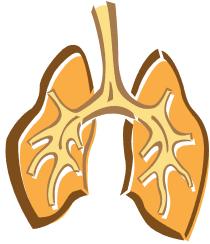
REGIONAL INFECTION CONTROL NETWORKS RÉSEAUX RÉGIONAUX DE CONTRÔLE DES INFECTIONS

Healthy Skin Healthy Patient Equation



REGIONAL INFECTION CONTROL NETWORKS RÉSEAUX RÉGIONAUX DE CONTRÔLE DES INFECTIONS

Inhalation



REGIONAL INFECTION CONTROL NETWORKS RÉSEAUX RÉGIONAUX DE CONTRÔLE DES INFECTIONS

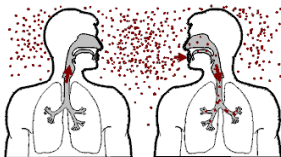
Determinants of risk for asthma

- Chronic exposures to inhaled irritants
- Bleach consistently associated with respiratory symptoms, particularly asthma
- Readily detectable amounts of free chlorine during normal bleach use without mixing
- Chemical reaction of hypochlorite with ammonium salts or organic matter may lead to release of chloramines
- Also risk for RADS (Reactive Airways Dysfunction Syndrome)
- Previous acute exposure

REGIONAL INFECTION CONTROL NETWORKS RÉSEAUX RÉGIONAUX DE CONTRÔLE DES INFECTIONS

TB is one of a few airborne infections

- Droplet nuclei are inhaled



- Active TB on CXR



REGIONAL INFECTION CONTROL NETWORKS RÉSEAUX RÉGIONAUX DE CONTRÔLE DES INFECTIONS

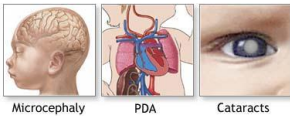
Rubella 1 dose needed

Exposure:
Susceptible staff
excluded from
duty from day 7
to 21 after
exposure



Consequences of Rubella infection in pregnancy

Rubella syndrome

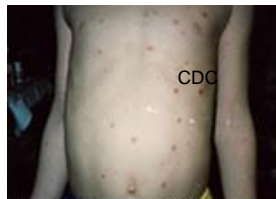


Microcephaly PDA Cataracts



Varicella (Chicken pox) 2 doses one month apart or history of disease

- Many outbreaks have occurred in health care facilities, often caused by susceptible foreign-born worker
- **Exposure:** Susceptible non-immunized worker then must be furloughed from Day 11 to 21 post-exposure
- VZIG for exposed immunocompromized or pregnant workers – furlough to 28 days)



A typical case of chickenpox

Scabies—a common and vexing source of outbreaks



- Nosocomial transmission occurs
- Major outbreaks in LTC
- Treatment with 5% permethrin (Kwellada-P™ or NIX® lotion)
- Massage in from neck to soles of feet before bed; leave on for 12 hours and then thoroughly shower or bathe next morning
- Same regime for treatment and prophylaxis
- OK to use in pregnancy
- Exclude infected worker from duty until treatment is effective

REGIONAL INFECTION CONTROL NETWORKS  RÉSEAUX RÉGIONAUX DE CONTRÔLE DES INFECTIONS

Summary Slide

- Remember responsibilities in legislation
- Know what is in your toolkit—risk assessment
- Know your routes of exposure
- Remember the importance of a hand care program
- Vaccine for vaccine-preventable diseases is critical for minimizing preventable infections and outbreaks
- OHA/OMA protocols state that all HCWs, as a condition of employment, should provide evidence of immunity as in protocols; most hospitals are now requiring this of all HC students doing clinical in our facilities as well.
- Have a process in place for appropriate timely intervention for bloodborne pathogen exposures
- A healthy workplace policy will ultimately reduce infection transmission
- Think scabies sooner rather than later

REGIONAL INFECTION CONTROL NETWORKS  RÉSEAUX RÉGIONAUX DE CONTRÔLE DES INFECTIONS

Thank you--



<http://www.oha.com/services/healthsafety/pages/communicablediseaseessurveillanceprotocols.aspx>

REGIONAL INFECTION CONTROL NETWORKS  RÉSEAUX RÉGIONAUX DE CONTRÔLE DES INFECTIONS
