

Ottawa Public Health
Santé publique

Epidemiology Update

Cameron McDermaid
Epidemiologist
October 20, 2011

ottawa.ca/health 613-580-6744 | TTY: 613-580-9656

■ Study of the distribution and determinants of health-related states or events in specified populations and the application of this study to control of health problems

- A Dictionary of Epidemiology, 4th edition, J. Last

2

What Does That Mean?

- Distribution
- Determinants
- Health-related states
- Populations
- Control

3

RESPIRATORY OUTBREAKS

4

How do we do surveillance for respiratory infections?

- Respiratory Infection Outbreaks in Institutions
- Seasonal Influenza
 - Laboratory confirmed cases
 - Institutional outbreaks
 - ILI in community
- Alerts from local emergency rooms

5

Institutional Respiratory Outbreaks 2010 – 2011 Season in Ottawa

- 61 outbreaks in institutions (LTC, acute care)
- 940 cases
- 31 hospitalizations
- 10 deaths

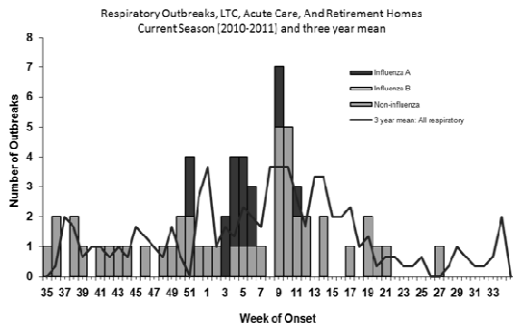
6

Institutional Respiratory Outbreaks by the Numbers, 2009-2010

	Influenza A	Influenza B	Other Respiratory
Total Number of Outbreaks	15	0	46
Cases			
Staff Cases	46	0	167
Resident Cases	152	0	575
Resident Hospitalizations	13	0	18
Resident Deaths	2	0	8
Median days duration (range)	13 (8-28)	0	15 (4-50)

7

2010-2011 Respiratory Season



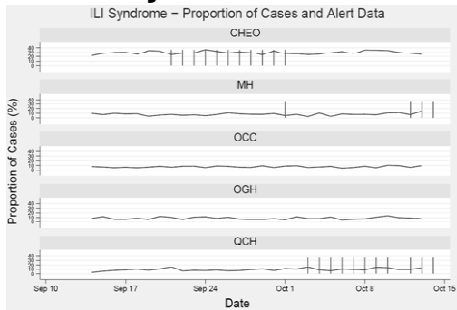
8

What's going on right now? (Week 41)

- 1 influenza case (H3) reported in week 39 in Ottawa, which was earlier than we'd usually see seasonal cases.
- 6 respiratory outbreaks season to date
- No influenza outbreaks
- One respiratory outbreak is open in Ottawa
- Several respiratory viruses circulating in Ontario
- 23/1000 consultations for ILI in sentinel physicians

9

ASSET – Syndromic Surveillance



10

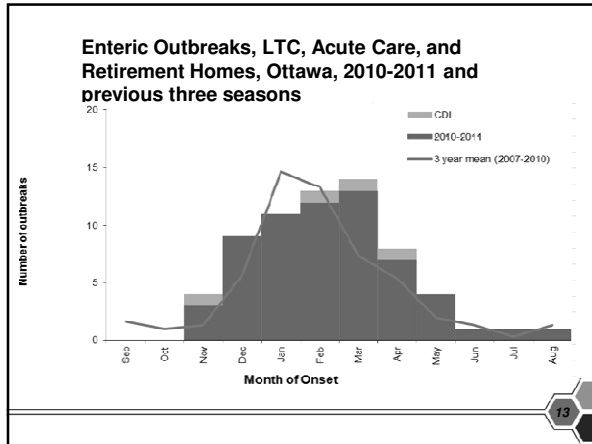
ENTERIC OUTBREAKS

11

How do we do surveillance for enteric infections?

- Enteric Outbreaks in Institutions
 - LTC, Acute Care, Retirement Homes
 - Schools
 - Daycares
- Enteric Outbreaks in Communities
- Reportable Diseases
- Alerts from local emergency rooms

12



Enteric outbreaks by the numbers, 2010-2011 (non-CDI)

Total Number of Outbreaks	62
Median Days Duration (Range)	15 (4-45)
# Resident Cases (% total)	1327 (78.4%)
# Staff Cases (% total)	366 (21.6%)
Hospitalizations	44
Deaths	10
# Norovirus (% total)	22 (34%)

Epidemiology posted on ottawa.ca

http://www.ottawa.ca/residents/health/statistics/index_en.html

Ottawa Public Health (OPH) collects data from a variety of sources in order to monitor the health of our community. Monitoring health statistics helps OPH:

- Identify health problems and successes in Ottawa.
- Monitor patterns of communicable and non-communicable diseases, demographic profiles, behavioral risk factors, outbreaks, and other address health needs.
- Provide information to our internal and external partners in order to develop and evaluate new policies and programs.

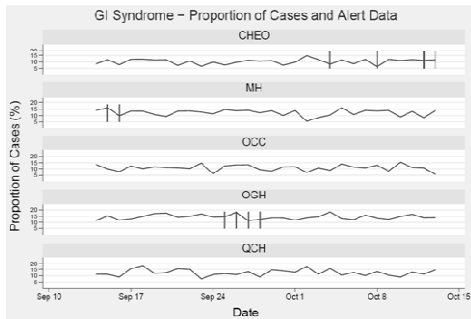
This section presents the most current available statistics on a wide range of health indicators.

What's going on right now? (Week 41)

- 1 influenza case (H3) reported in week 39 in Ottawa, which was earlier than we'd usually see seasonal cases.
- 1 enteric outbreak season to date
- No enteric outbreaks are open in Ottawa
- Several respiratory viruses circulate in Ontario

16

ASSET – Syndromic Surveillance



17

New reports

- By facility reports
- Provide site specific outbreak history

18
